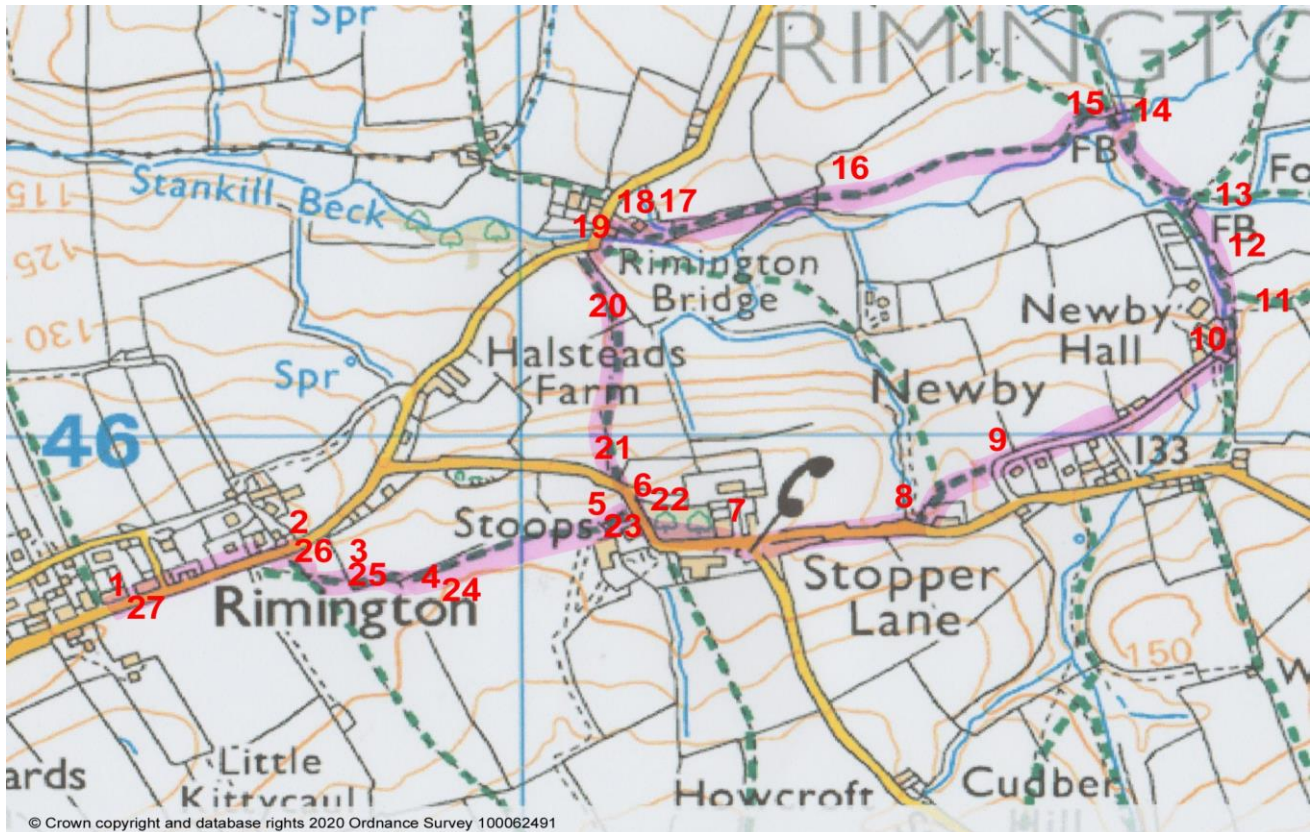


4 Stoops, Newby Hall & clapper bridge (DK walk 4) Approximately 2 1/2 miles



Start the walk at Rimington House **1**, which used to be the Black Bull pub. Go towards Gisburn until the stile **2** on your right, opposite The Old Manor House is reached.

1

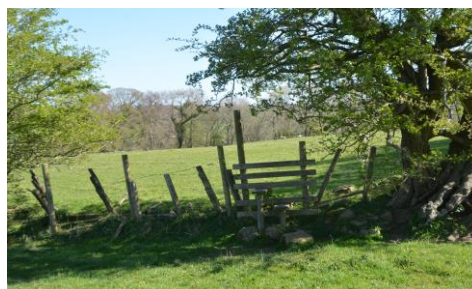


2



Go over the stile and then bear left to find a stile **3**, and go over into another field. Keep the hedge on your right and leave this field by the first gap in the hedge **4**, where a stile used to be. Continue in the same direction with a good example of old hedge and ditch boundary now on your left.

3



4



At the end of this field there is a stile **5** just before Stoops Farm, to your right, and then a few yards further on a gate **6** through which you descend into Stoops Lane

5



6



Turn right and pass Rufus Carr's garage on the right and the village Memorial Hall **7** on the left. On the right are the properties of Stopper Lane and the chapel, now converted, where Francis Duckworth, composer of the tune Rimington, worshipped. Carry on until a stile **8** is reached, just before Yew Tree House.

7



8



Go over the stile and turn right immediately behind the garage and bear slightly left to find stile **9** just before the facing stone wall curves away. Go over the stile and continue left along this narrow lane passing properties on the right and a cottage on the left until the entrance **10** to Newby Hall farm is reached.

9



10



Turn left to continue into the farm yard but then keep to the right to pass to the RHS of an iron shed **11**, and on to an iron gate a few metres behind it. Carry on with the small stream on your left and through a kissing gate **12**.

11



12



Continue in the same direction until you cross a foot bridge **13**. Turn immediately left and continue in the direction of the stream which is a few yards to, your left, until a wooden crossing point, clapper bridge and stile **14** are reached. Go over these into the next field and turn to the left.

13



14



The route now follows the stream on your left for a short distance where there is a weir¹⁵. This produced the head of water for Rimington Corn Mill. From the weir cut diagonally across the field towards an electricity pole, effectively following the no longer visible line of the goit (water channel to the mill) and to a field gate ¹⁶ where the goit does start to be visible on your right.

15



16



Go through the gate and follow the track and goit and look at what remains of the mill pond ¹⁷ before passing through 2 gates ¹⁸. Look to the right to see the buildings on the site of the old corn mill to come out on Rimington Lane.

17



18



It is possible to continue on the lane, to your left, back to the start. However it is far more pleasant to go over the stile ¹⁹ just few metres the other side of the bridge. From this stile go slightly to the right up a slight slope over stile ²⁰ (with building blocks)

19



20



From this stile continue up the slight slope to kissing gate ²¹ nearly in the corner of the field. Go through this gate on to Stoops Lane. Turn left here and after a few yards there is a gate ²² on the right, before Stoops Farm.

21



22



Go through this gate and before you there is a stile **23** to go over before entering a field with large trees and the hedge and ditch boundary on your right. Continue to the far end of this field where there is a gap **24** where the stile used to be. Go through this gap and turn to the left.

23



24



After a few metres there is another stile **25**. Go over this stile and then diagonally to stile **26** opposite The Old Manor House. Go over this stile to drop down into Rimington Lane.

25



26



Rimington House is just a very short walk to the left. The final picture shows the Black Bull **27** as it was just before its conversion to apartments.

27

